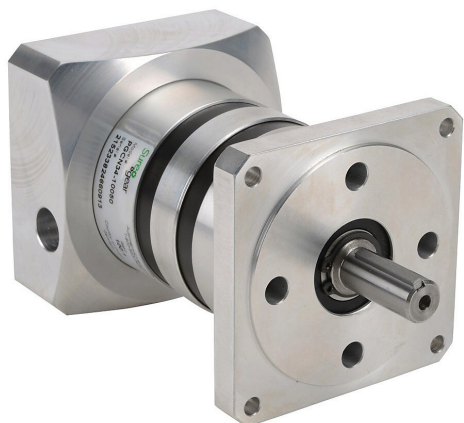


PGCN34-10050 Cut Sheet



SureGear precision planetary gearbox, 100:1 ratio, inline, 0.5in diameter output shaft, nominal output torque 16 N-m (142 lb-in), 2-stage, NEMA 34 frame. For use with SureStep NEMA 34 motors.

For complete product information, please see this item on our store at the following link:



<https://www.automationdirect.com/pn/PGCN34-10050>

Technical Specifications

Brand	SureGear
Item	Gearbox
Application	Precision
Gearbox Type	Planetary
Gear Ratio	100:1
Output Configuration	Inline
Gearbox Output Shaft Diameter	0.5in
Nominal Output Torque	Nominal output torque 16 N-m (142 lb-in)
Number of Stages	2
Frame	NEMA 34
For Use With	SureStep NEMA 34 motors
Includes	Input adapter bushing for 1/2in motor shaft, motor mounting hardware and output shaft key

Agency Approvals

UL Listed File #	None
UL Recognized File #	None
UL Hazardous File #	None
CE	None
CSA File #	None
RoHS Status	No
EU REACH	View EU REACH document