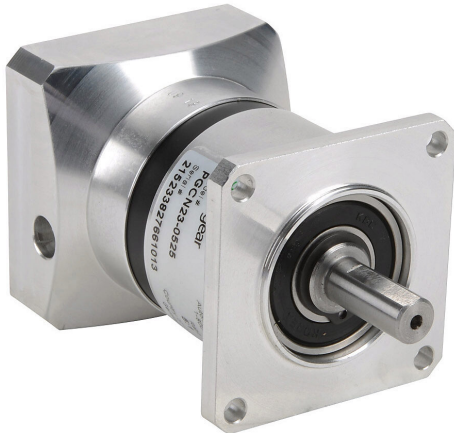


PGCN23-0525 Cut Sheet



SureGear precision planetary gearbox, 5:1 ratio, inline, 0.375in diameter output shaft, nominal output torque 6.5 N-m (58 lb-in), 1-stage, NEMA 23 frame. For use with SureStep NEMA 23 motors.

For complete product information, please see this item on our store at the following link:



<https://www.automationdirect.com/pn/PGCN23-0525>

Technical Specifications

Brand	SureGear
Item	Gearbox
Application	Precision
Gearbox Type	Planetary
Gear Ratio	5:1
Output Configuration	Inline
Gearbox Output Shaft Diameter	0.375in
Nominal Output Torque	Nominal output torque 6.5 N-m (58 lb-in)
Number of Stages	1
Frame	NEMA 23
For Use With	SureStep NEMA 23 motors
Includes	Motor mounting hardware

Agency Approvals

UL Listed File #	None
UL Recognized File #	None
UL Hazardous File #	None
CE	None
CSA File #	None
RoHS Status	No
EU REACH	View EU REACH document