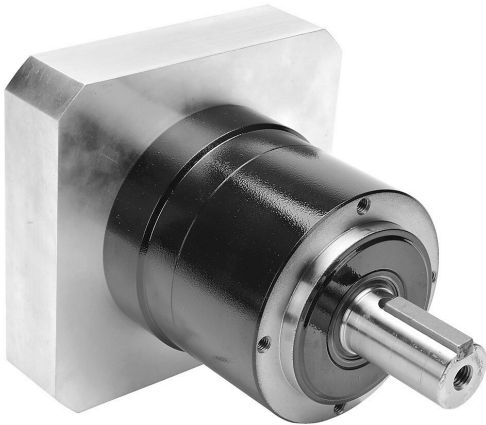


PGA120-10A6 Cut Sheet



SureGear high-precision planetary gearbox, 10:1 ratio, inline, 32mm diameter output shaft, nominal output torque 120 N-m (1062 lb-in), 1-stage, 120mm frame. For use with SureServo and SureServo2 SV(2)M-220(B) and SV(2)M-230(B) motors.

For complete product information, please see this item on our store at the following link:



<https://www.automationdirect.com/pn/PGA120-10A6>

Technical Specifications

Brand	SureGear
Item	Gearbox
Application	High-precision
Gearbox Type	Planetary
Gear Ratio	10:1
Output Configuration	Inline
Gearbox Output Shaft Diameter	32mm

Nominal Output Torque	Nominal output torque 120 N-m (1062 lb-in)
Number of Stages	1
Frame	120mm
For Use With	SureServo and SureServo2 SV(2)M-220(B) and SV(2)M-230(B) motors
Includes	Input adapter bushing, motor mounting hardware and output shaft key

Agency Approvals

UL Listed File #	None
UL Recognized File #	None
UL Hazardous File #	None
CE	None
CSA File #	None
RoHS Status	No
EU REACH	View EU REACH document

Dimensional Drawings



2D Drawing PDF Link:
<https://cdn.automationdirect.com/static/drawings/PGA120-10A6.pdf>
See store item page for other formats.