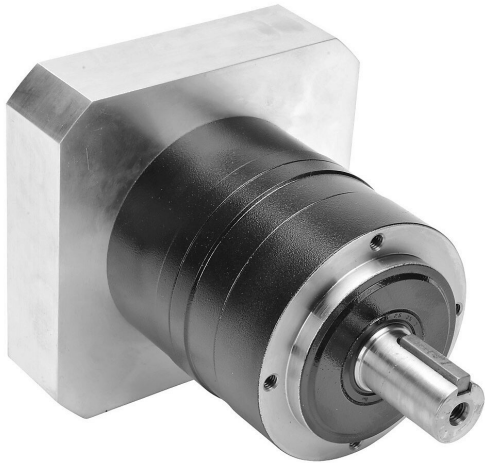


PGA090-10A5 Cut Sheet



SureGear high-precision planetary gearbox, 10:1 ratio, inline, 22mm diameter output shaft, nominal output torque 50 N-m (443 lb-in), 1-stage, 90mm frame. For use with SureServo and SureServo2 SV(2)M-210(B) motors.

For complete product information, please see this item on our store at the following link:



<https://www.automationdirect.com/pn/PGA090-10A5>

Technical Specifications

Brand	SureGear
Item	Gearbox
Application	High-precision
Gearbox Type	Planetary
Gear Ratio	10:1
Output Configuration	Inline
Gearbox Output Shaft Diameter	22mm
Nominal Output Torque	Nominal output torque 50 N-m (443 lb-in)
Number of Stages	1
Frame	90mm
For Use With	SureServo and SureServo2 SV(2)M-210(B) motors
Includes	Input adapter bushing, motor mounting hardware and output shaft key

Agency Approvals

UL Listed File #	None
UL Recognized File #	None
UL Hazardous File #	None
CE	None
CSA File #	None
RoHS Status	No
EU REACH	View EU REACH document