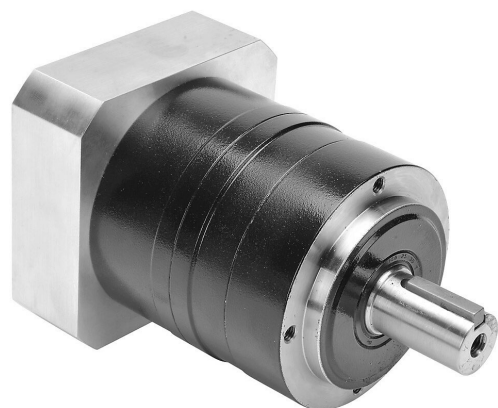


PGA090-05A4 Cut Sheet



SureGear high-precision planetary gearbox, 5:1 ratio, inline, 22mm diameter output shaft, nominal output torque 75 N-m (664 lb-in), 1-stage, 90mm frame. For use with SureServo and SureServo2 SV(2)L-210(B) motors.

For complete product information, please see this item on our store at the following link:



<https://www.automationdirect.com/pn/PGA090-05A4>

Technical Specifications

Brand	SureGear
Item	Gearbox
Application	High-precision
Gearbox Type	Planetary
Gear Ratio	5:1
Output Configuration	Inline
Gearbox Output Shaft Diameter	22mm
Nominal Output Torque	Nominal output torque 75 N-m (664 lb-in)
Number of Stages	1
Frame	90mm
For Use With	SureServo and SureServo2 SV(2)L-210(B) motors
Includes	Input adapter bushing, motor mounting hardware and output shaft key

Agency Approvals

UL Listed File #	None
UL Recognized File #	None
UL Hazardous File #	None
CE	None
CSA File #	None
RoHS Status	No
EU REACH	View EU REACH document

Dimensional Drawings



2D Drawing PDF Link:
<https://cdn.automationdirect.com/static/drawings/PGA090-05A4.pdf>
See store item page for other formats.