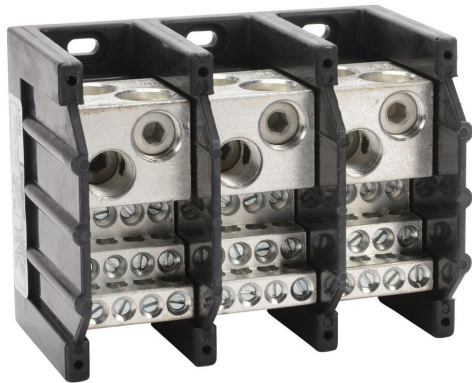


PB5123 Cut Sheet



Edison open terminal block, 570A, 3-pole, line side: 2 openings accept 300 MCM to 4 AWG, load side: 12 openings accept 4AWG to 14 AWG, panel mount, UL 1059 recognized.

For complete product information, please see this item on our store at the following link:



<https://www.automationdirect.com/pn/PB5123>

Technical Specifications

| | |
|---------------------------|------------------------------------|
| Brand | Edison |
| Item | Open Terminal block |
| Amperage Rating | 570A |
| Number of Poles | 3 |
| Line Side Openings | 2 openings accept 300 MCM to 4 AWG |
| Load Side Openings | 12 openings accept 4AWG to 14 AWG |
| Mounting | Panel |
| SCCR Rating | 10kA SCCR |
| UL Rating | UL 1059 recognized |

Agency Approvals

| | |
|-----------------------------|--|
| UL Listed File # | None |
| UL Recognized File # | E62622 |
| UL Hazardous File # | None |
| CE | View CE declarations |
| CSA File # | 700489 |
| RoHS Status | No |
| EU REACH | View EU REACH document |
| Other | None |