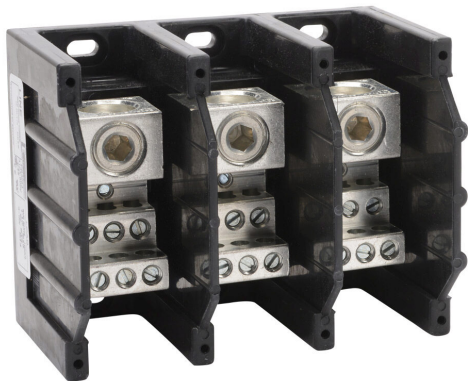


# PB3063 Cut Sheet



Edison open terminal block, 310A, 3-pole, line side: 1 opening accepts 350 MCM to 4 AWG, load side: 6 openings accept 4 AWG to 12 AWG, panel mount, UL 1059 recognized.

For complete product information, please see this item on our store at the following link:



<https://www.automationdirect.com/pn/PB3063>

## Technical Specifications

Brand	Edison
Item	Terminal block
Terminal Block Type	Open
Amperage Rating	310A
Number of Poles	3
Line Side Openings	1 opening accepts 350 MCM to 4 AWG
Load Side Openings	6 openings accept 4 AWG to 12 AWG
Mounting	Panel
SCCR Rating	200kA SCCR
UL Rating	UL 1059 recognized

## Agency Approvals

UL Listed File #	None
UL Recognized File #	E62622
UL Hazardous File #	None
CE	<a href="#">View CE declarations</a>
CSA File #	700489
RoHS Status	No
EU REACH	<a href="#">View EU REACH document</a>
Other	None

## Dimensional Drawings



2D Drawing PDF Link:  
<https://cdn.automationdirect.com/static/drawings/PB3063.pdf>  
See store item page for other formats.