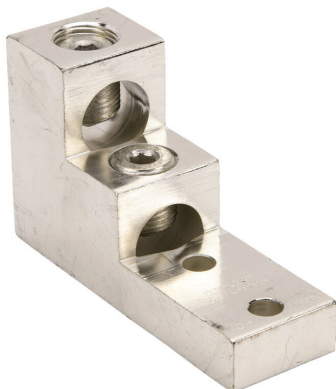


PB2-750D1-1 Cut Sheet



Penn-Union mechanical lug, panelboard, tin-plated aluminum, 600V, 2 openings, (1) 1/0 AWG-750 MCM stranded copper or aluminum, AL9CU.

For complete product information, please see this item on our store at the following link:



<https://www.automationdirect.com/pn/PB2-750D1-1>

Technical Specifications

Brand	Penn-Union
Item	Mechanical lug
Lug Type	Panelboard
Material	Tin-plated aluminum
Voltage Rating	600V
Number Of Openings	2
Tightening Torque	1/0 AWG-750 MCM 620 in-lb copper or aluminum
Conductor Bolt Style	5/16in hex
Conductor Material	Copper or aluminum
Conductor Size	(1) 1/0 AWG-750 MCM stranded copper or aluminum
Mounting Holes	2 hole
Mounting Bolt Size	3/8in
Dual Rating	AL9CU

Agency Approvals

UL Listed File #	E12822
UL Recognized File #	None
UL Hazardous File #	None
CSA File #	None
RoHS Status	Meets RoHS Chemical Restrictions - No CE (See RoHS Statement Below)
EU REACH	View EU REACH document
Other	RoHS Statement

Dimensional Drawings



2D Drawing PDF Link:
<https://cdn.automationdirect.com/static/drawings/2d/PB2-750D1-1.pdf>
See store item page for other formats.