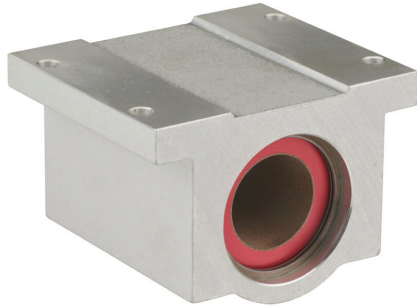


# P16C Cut Sheet



PBC Simplicity series single pillow block, plain bearing, 2.81in overall length, PTFE, 1in inside diameter, aluminum housing, 0.0015in running clearance. For use with 1in diameter PBC shafts.

For complete product information, please see this item on our store at the following link:



<https://www.automationdirect.com/pn/P16C>

## Technical Specifications

<b>Brand</b>	PBC
<b>Item</b>	Single pillow block
<b>Series</b>	Simplicity
<b>Block Type</b>	Closed type
<b>Overall Length</b>	2.81in
<b>Bearing Type</b>	Plain bearing
<b>Bearing Material</b>	PTFE
<b>Housing Fit</b>	Self-aligning
<b>Bearing Inside Diameter</b>	1in
<b>Housing Material</b>	Aluminum
<b>Running Clearance</b>	0.0015in
<b>For Use With</b>	1in diameter PBC shafts

## Agency Approvals

<b>UL Listed File #</b>	None
<b>UL Recognized File #</b>	None
<b>UL Hazardous File #</b>	None
<b>CE</b>	None
<b>CSA File #</b>	None
<b>RoHS Status</b>	Meets RoHS Chemical Restrictions - No CE (See RoHS Statement Below)
<b>EU REACH</b>	<a href="#">View EU REACH document</a>
<b>Other</b>	<a href="#">RoHS Statement</a>

## Dimensional Drawings



2D Drawing PDF Link:  
<https://cdn.automationdirect.com/static/drawings/2d/P16C.pdf>  
See store item page for other formats.