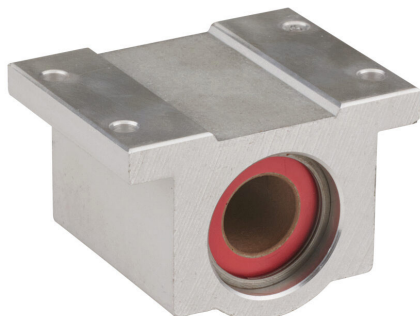


# P10C Cut Sheet



PBC Simplicity series single pillow block, plain bearing, 1.94in overall length, PTFE, 5/8in inside diameter, aluminum housing, 0.0015in running clearance. For use with 5/8in diameter PBC shafts.

For complete product information, please see this item on our store at the following link:



<https://www.automationdirect.com/pn/P10C>

---

## Technical Specifications

<b>Brand</b>	PBC
<b>Item</b>	Single pillow block
<b>Series</b>	Simplicity
<b>Block Type</b>	Closed type
<b>Overall Length</b>	1.94in
<b>Bearing Type</b>	Plain bearing
<b>Bearing Material</b>	PTFE
<b>Housing Fit</b>	Self-aligning
<b>Bearing Inside Diameter</b>	5/8in
<b>Housing Material</b>	Aluminum
<b>Running Clearance</b>	0.0015in
<b>For Use With</b>	5/8in diameter PBC shafts

---

## Agency Approvals

<b>UL Listed File #</b>	None
<b>UL Recognized File #</b>	None
<b>UL Hazardous File #</b>	None
<b>CE</b>	None
<b>CSA File #</b>	None
<b>RoHS Status</b>	Meets RoHS Chemical Restrictions - No CE (See RoHS Statement Below)
<b>EU REACH</b>	<a href="#">View EU REACH document</a>
<b>Other</b>	<a href="#">RoHS Statement</a>

---

## Dimensional Drawings



2D Drawing PDF Link:  
<https://cdn.automationdirect.com/static/drawings/2d/P10C.pdf>  
See store item page for other formats.