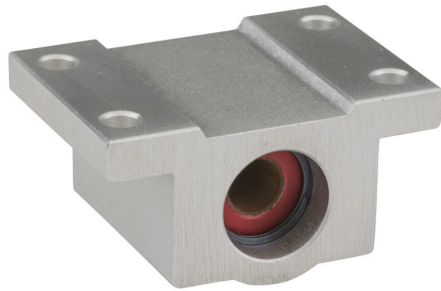


P04 Cut Sheet



PBC Simplicity series single pillow block, plain bearing, 1.19in overall length, PTFE, 1/4in inside diameter, aluminum housing, 0.0005in running clearance. For use with 1/4in diameter PBC shafts.

For complete product information, please see this item on our store at the following link:



<https://www.automationdirect.com/pn/P04>

Technical Specifications

Brand	PBC
Item	Single pillow block
Series	Simplicity
Block Type	Closed type
Overall Length	1.19in
Bearing Type	Plain bearing
Bearing Material	PTFE
Housing Fit	Self-aligning
Bearing Inside Diameter	1/4in
Housing Material	Aluminum
Running Clearance	0.0005in
For Use With	1/4in diameter PBC shafts

Agency Approvals

UL Listed File #	None
UL Recognized File #	None
UL Hazardous File #	None
CE	None
CSA File #	None
RoHS Status	Meets RoHS Chemical Restrictions - No CE (See RoHS Statement Below)
EU REACH	View EU REACH document
Other	RoHS Statement

Dimensional Drawings



2D Drawing PDF Link:
<https://cdn.automationdirect.com/static/drawings/2d/P04.pdf>
See store item page for other formats.