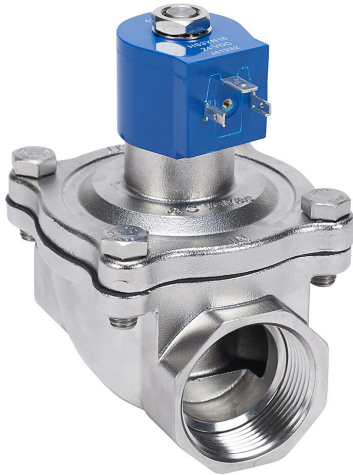


NS211YF16C7HJ2 Cut Sheet



GC Valves potable water solenoid valve, 2-port (2-way), 2-position, N.C., 316 stainless steel body, EPDM rubber seal(s), 1-1/2in female NPT inlet(s), 1-1/2in female NPT outlet(s), Cv=13, 24 VDC operating voltage, 10W, NSF/ANSI/CAN 61.

For complete product information, please see this item on our store at the following link:



<https://www.automationdirect.com/pn/NS211YF16C7HJ2>

Technical Specifications

Brand	GC Valves
Item	Valve
Working Fluid	Potable water
Valve Type	Solenoid process
Port Quantity	2-port (2-way)
Number Of Positions	2
Valve Configuration	N.C.
Action	Single solenoid spring return
Body Material	316 stainless steel
Seal Material	EPDM rubber

Inlet Port	1-1/2in female NPT
Outlet Port	1-1/2in female NPT
Flow Coefficient	13
Minimum Operating Pressure	5 psi
Maximum Operating Pressure	150 psi
Working Fluid Temperature	32-176 °F
Operating Voltage	24 VDC
Power Rating	10W
Electrical Connection	18mm DIN style wiring plug
Potable Water Certifications	NSF/ANSI/CAN 61

Agency Approvals

UL Listed File #	None
UL Recognized File #	MH17997
UL Hazardous File #	None
CE	View CE declarations
CSA File #	069111_0_000
RoHS Status	Yes (See CE Doc)
EU REACH	View EU REACH document
Other	NSF Listing

Dimensional Drawings



2D Drawing PDF Link:
<https://cdn.automationdirect.com/static/drawings/NS211YF16C7HJ2.pdf>
See store item page for other formats.