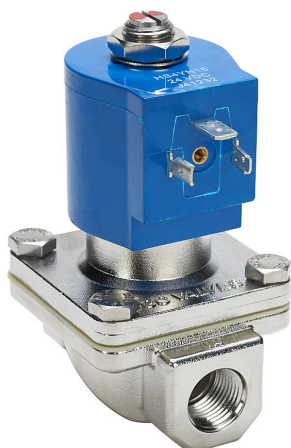


# NS201YF16F7CG4 Cut Sheet



GC Valves potable water solenoid valve, 2-port (2-way), 2-position, N.C., 316 stainless steel body, 3/8in female NPT inlet(s), 3/8in female NPT outlet(s), Cv=4.3, 24 VDC operating voltage, 10W.

For complete product information, please see this item on our store at the following link:



<https://www.automationdirect.com/pn/NS201YF16F7CG4>

## Technical Specifications

<b>Brand</b>	GC Valves
<b>Item</b>	Valve
<b>Working Fluid</b>	Potable water
<b>Valve Type</b>	Solenoid process
<b>Port Quantity</b>	2-port (2-way)
<b>Number Of Positions</b>	2
<b>Valve Configuration</b>	N.C.
<b>Action</b>	Single solenoid spring return
<b>Body Material</b>	316 stainless steel

<b>Inlet Port</b>	3/8in female NPT
<b>Outlet Port</b>	3/8in female NPT
<b>Flow Coefficient</b>	4.3
<b>Minimum Operating Pressure</b>	0 psi
<b>Maximum Operating Pressure</b>	90 psi
<b>Operating Voltage</b>	24 VDC
<b>Power Rating</b>	10W
<b>Electrical Connection</b>	18mm DIN style wiring plug
<b>Form Factor</b>	Standard

## Agency Approvals

<b>UL Listed File #</b>	None
<b>UL Recognized File #</b>	MH17998
<b>UL Hazardous File #</b>	None
<b>CE</b>	<a href="#">View CE declarations</a>
<b>CSA File #</b>	069111_0_000
<b>RoHS Status</b>	Yes (See CE Doc)
<b>EU REACH</b>	<a href="#">View EU REACH document</a>
<b>Other</b>	<a href="#">NSF Listing</a>

## Dimensional Drawings



2D Drawing PDF Link:  
<https://cdn.automationdirect.com/static/drawings/NS201YF16F7CG4.pdf>  
See store item page for other formats.