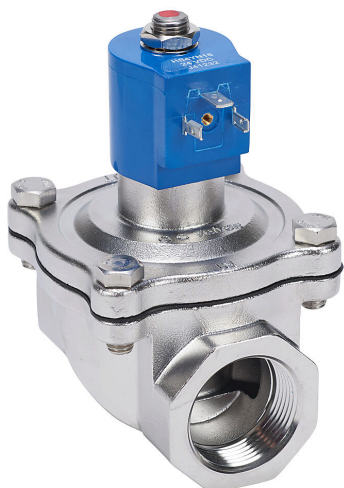


NS201YF16C7GJ2 Cut Sheet



GC Valves potable water solenoid valve, 2-port (2-way), 2-position, N.C., 316 stainless steel body, 1-1/4in female NPT inlet(s), 1-1/4in female NPT outlet(s), Cv=18, 24 VDC operating voltage, 10W, NSF/ANSI/CAN 61.

For complete product information, please see this item on our store at the following link:



<https://www.automationdirect.com/pn/NS201YF16C7GJ2>

Technical Specifications

Brand	GC Valves
Item	Valve
Working Fluid	Potable water
Valve Type	Solenoid process
Agency Approval	NSF/ANSI/CAN 61
Port Quantity	2-port (2-way)
Number Of Positions	2
Valve Configuration	N.C.
Action	Single solenoid spring return
Body Material	316 stainless steel
Inlet Port	1-1/4in female NPT
Outlet Port	1-1/4in female NPT
Flow Coefficient	18
Minimum Operating Pressure	0 psi
Maximum Operating Pressure	100 psi
Operating Voltage	24 VDC
Power Rating	10W
Electrical Connection	18mm DIN style wiring plug

Agency Approvals

UL Listed File #	None
UL Recognized File #	MH17997
UL Hazardous File #	None
CE	View CE declarations
CSA File #	069111_0_000
RoHS Status	Yes (See CE Doc)
EU REACH	View EU REACH document
Other	NSF Listing