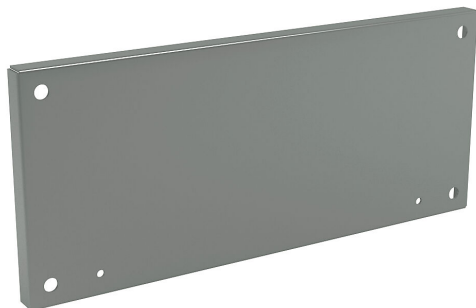


NP1224 Cut Sheet



Wiegmann subpanel, carbon steel, white, powder coat finish. For use with 12x24/24x12 (HxW) N1212240x and N122412xx enclosures.

For complete product information, please see this item on our store at the following link:



<https://www.automationdirect.com/pn/NP1224>

Technical Specifications

Brand	Wiegmann
Item	Subpanel
Height	9in
Width	21in
Thickness	12 gauge
Material	Carbon steel
Color	White
Finish	Powder coat
Perforations accept self-tapping screws for mounting lightweight components	No
For Use With	12x24/24x12 (HxW) N1212240x and N122412xx enclosures

Agency Approvals

UL Listed File #	None
UL Recognized File #	None
UL Hazardous File #	None
CE	None
CSA File #	None
RoHS Status	No
EU REACH	View EU REACH document