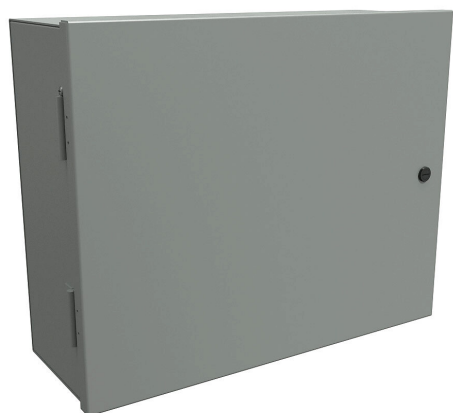


N1A16207 Cut Sheet



Hammond enclosure, NEMA 1, 16 x 20 x 7in (HxWxD), wall mount, carbon steel, ANSI 61 gray, powder coat finish, single-door, 1/4-turn semi-flush latch.

For complete product information, please see this item on our store at the following link:



<https://www.automationdirect.com/pn/N1A16207>

Technical Specifications

Brand	Hammond
Item	Enclosure
Subpanel	Subpanel included
Slope Top	No
NEMA Rating	1
IP Rating	IP20
Nominal Enclosure Dimensions	16 x 20 x 7in (HxWxD)
Enclosure Height	16.38in
Enclosure Width	20.38in
Enclosure Depth	7.18in
Mounting	Wall
Integral Mounting Feet	No
Integral Mounting Flange	No

Dual Access	No
Knockouts	No
Material	Carbon steel
Color	ANSI 61 gray
Finish	Powder coat
Cover Type	Single-door
Hinge Type	Slip hinges
Number of Hinges Per Door	2
Latch Type	1/4-turn semi-flush latch
Number Of Latches	1
Padlockable	No
Keylocking	No

Agency Approvals

UL Listed File #	E71072
UL Recognized File #	None
UL Hazardous File #	None
CE	View CE declarations
CSA File #	LR21001
RoHS Status	Yes (See CE Doc)
EU REACH	View EU REACH document