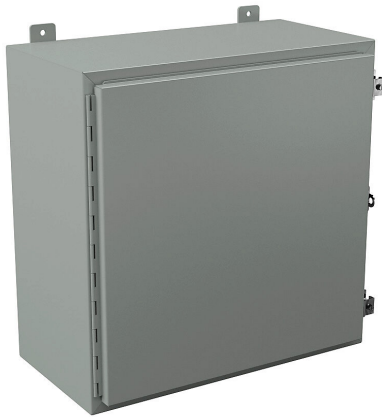


N12242412 Cut Sheet



Wiegmann enclosure, NEMA 12/13, 24 x 24 x 12in (HxWxD), wall mount, carbon steel, ANSI 61 gray, powder coat finish, single-door, (2) plated steel clamps, padlock hasp and staple.

For complete product information, please see this item on our store at the following link:



<https://www.automationdirect.com/pn/N12242412>

Technical Specifications

Brand	Wiegmann	Dual Access	No
Item	Enclosure	Knockouts	No
Subpanel	Purchase subpanel separately	Bottom Gland Plate	No
Slope Top	No	Material	Carbon steel
3-Piece Assembly	No	Color	ANSI 61 gray
Vented	No	Finish	Powder coat
NEMA Rating	12/13	Cover Type	Single-door
Nominal Enclosure Dimensions	24 x 24 x 12in (HxWxD)	Hinge Type	Continuous hinge
Enclosure Height	24.00in	Number of Hinges Per Door	1
Enclosure Width	24.00in	Latch Type	(2) plated steel clamps
Enclosure Depth	13.03in	Padlock Attachment Type	Padlock hasp and staple
Mounting	Wall	Shelf	No
Integral Mounting Feet	Yes	Padlockable	Yes
Integral Mounting Flange	No	Keylocking	No

Agency Approvals

UL Listed File #	E64791
UL Recognized File #	None
UL Hazardous File #	None
CE	None
CSA File #	None
RoHS Status	No
EU REACH	View EU REACH document

Dimensional Drawings



2D Drawing PDF Link:
<https://cdn.automationdirect.com/static/drawings/N12242412.pdf>
See store item page for other formats.