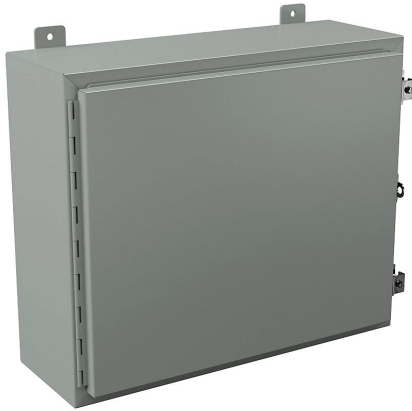


# N12202408 Cut Sheet



Wiegmann enclosure, NEMA 12/13, 20 x 24 x 8in (HxWxD), wall mount, carbon steel, ANSI 61 gray, powder coat finish, single-door, (2) plated steel clamps, padlock hasp and staple.

For complete product information, please see this item on our store at the following link:



<https://www.automationdirect.com/pn/N12202408>

## Technical Specifications

<b>Brand</b>	Wiegmann	<b>Dual Access</b>	No
<b>Item</b>	Enclosure	<b>Knockouts</b>	No
<b>Subpanel</b>	Purchase subpanel separately	<b>Bottom Gland Plate</b>	No
<b>Slope Top</b>	No	<b>Material</b>	Carbon steel
<b>3-Piece Assembly</b>	No	<b>Color</b>	ANSI 61 gray
<b>Vented</b>	No	<b>Finish</b>	Powder coat
<b>NEMA Rating</b>	12/13	<b>Cover Type</b>	Single-door
<b>Nominal Enclosure Dimensions</b>	20 x 24 x 8in (HxWxD)	<b>Hinge Type</b>	Continuous hinge
<b>Enclosure Height</b>	20.00in	<b>Number of Hinges Per Door</b>	1
<b>Enclosure Width</b>	24.00in	<b>Latch Type</b>	(2) plated steel clamps
<b>Enclosure Depth</b>	9.03in	<b>Padlock Attachment Type</b>	Padlock hasp and staple
<b>Mounting</b>	Wall	<b>Shelf</b>	No
<b>Integral Mounting Feet</b>	Yes	<b>Padlockable</b>	Yes
<b>Integral Mounting Flange</b>	No	<b>Keylocking</b>	No

## Agency Approvals

<b>UL Listed File #</b>	E64791
<b>UL Recognized File #</b>	None
<b>UL Hazardous File #</b>	None
<b>CE</b>	None
<b>CSA File #</b>	None
<b>RoHS Status</b>	No
<b>EU REACH</b>	<a href="#">View EU REACH document</a>

## Dimensional Drawings



2D Drawing PDF Link:  
<https://cdn.automationdirect.com/static/drawings/N12202408.pdf>  
See store item page for other formats.