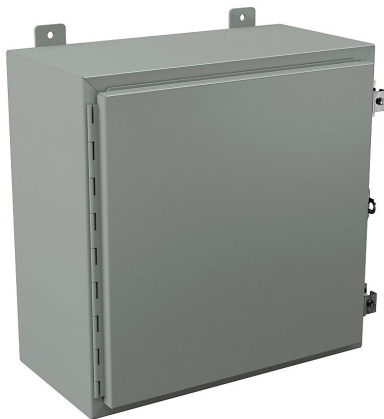


N12202010 Cut Sheet



Wiegmann enclosure, NEMA 12/13, 20 x 20 x 10in (HxWxD), wall mount, carbon steel, ANSI 61 gray, powder coat finish, single-door, (2) plated steel clamps, padlock hasp and staple.

For complete product information, please see this item on our store at the following link:



<https://www.automationdirect.com/pn/N12202010>

Technical Specifications

| | |
|-------------------------------------|------------------------------|
| Brand | Wiegmann |
| Item | Enclosure |
| Subpanel | Purchase subpanel separately |
| Slope Top | No |
| NEMA Rating | 12/13 |
| Nominal Enclosure Dimensions | 20 x 20 x 10in (HxWxD) |
| Enclosure Height | 20.00in |
| Enclosure Width | 20.00in |
| Enclosure Depth | 11.03in |
| Mounting | Wall |
| Integral Mounting Feet | Yes |
| Integral Mounting Flange | No |

| | |
|----------------------------------|-------------------------|
| Dual Access | No |
| Knockouts | No |
| Material | Carbon steel |
| Color | ANSI 61 gray |
| Finish | Powder coat |
| Cover Type | Single-door |
| Hinge Type | Continuous hinge |
| Number of Hinges Per Door | 1 |
| Latch Type | (2) plated steel clamps |
| Padlock Attachment Type | Padlock hasp and staple |
| Padlockable | Yes |
| Keylocking | No |

Agency Approvals

| | |
|-----------------------------|--|
| UL Listed File # | E64791 |
| UL Recognized File # | None |
| UL Hazardous File # | None |
| CE | None |
| CSA File # | None |
| RoHS Status | No |
| EU REACH | View EU REACH document |