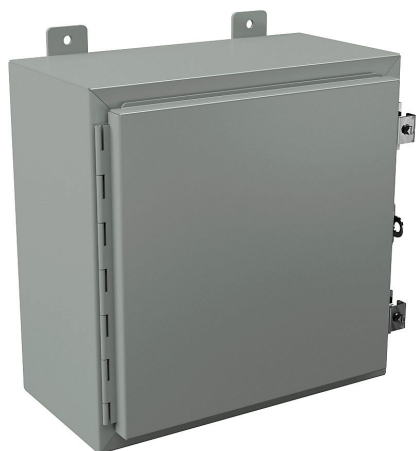


# N12161608 Cut Sheet



Wiegmann enclosure, NEMA 12/13, 16 x 16 x 8in (HxWxD), wall mount, carbon steel, ANSI 61 gray, powder coat finish, single-door, (2) plated steel clamps, padlock hasp and staple.

For complete product information, please see this item on our store at the following link:



<https://www.automationdirect.com/pn/N12161608>

## Technical Specifications

<b>Brand</b>	Wiegmann
<b>Item</b>	Enclosure
<b>Subpanel</b>	Purchase subpanel separately
<b>Slope Top</b>	No
<b>NEMA Rating</b>	12/13
<b>Nominal Enclosure Dimensions</b>	16 x 16 x 8in (HxWxD)
<b>Enclosure Height</b>	16.00in
<b>Enclosure Width</b>	16.00in
<b>Enclosure Depth</b>	9.03in
<b>Mounting</b>	Wall
<b>Integral Mounting Feet</b>	Yes
<b>Integral Mounting Flange</b>	No

<b>Dual Access</b>	No
<b>Knockouts</b>	No
<b>Material</b>	Carbon steel
<b>Color</b>	ANSI 61 gray
<b>Finish</b>	Powder coat
<b>Cover Type</b>	Single-door
<b>Hinge Type</b>	Continuous hinge
<b>Number of Hinges Per Door</b>	1
<b>Latch Type</b>	(2) plated steel clamps
<b>Padlock Attachment Type</b>	Padlock hasp and staple
<b>Padlockable</b>	Yes
<b>Keylocking</b>	No

## Agency Approvals

<b>UL Listed File #</b>	E64791
<b>UL Recognized File #</b>	None
<b>UL Hazardous File #</b>	None
<b>CE</b>	None
<b>CSA File #</b>	None
<b>RoHS Status</b>	No
<b>EU REACH</b>	<a href="#">View EU REACH document</a>