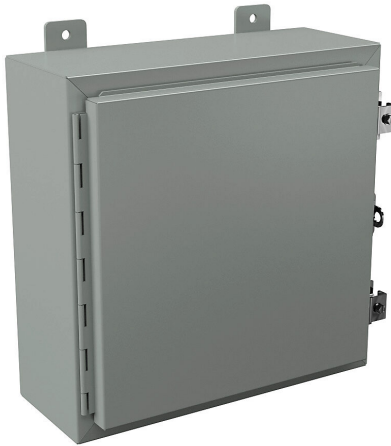


N12161606 Cut Sheet



Wiegmann enclosure, NEMA 12/13, 16 x 16 x 6in (HxWxD), wall mount, carbon steel, ANSI 61 gray, powder coat finish, single-door, (2) plated steel clamps, padlock hasp and staple.

For complete product information, please see this item on our store at the following link:



<https://www.automationdirect.com/pn/N12161606>

Technical Specifications

Brand	Wiegmann
Item	Enclosure
Subpanel	Purchase subpanel separately
Slope Top	No
3-Piece Assembly	No
Vented	No
NEMA Rating	12/13
Nominal Enclosure Dimensions	16 x 16 x 6in (HxWxD)
Enclosure Height	16.00in
Enclosure Width	16.00in
Enclosure Depth	7.03in
Mounting	Wall
Integral Mounting Feet	Yes
Integral Mounting Flange	No

Dual Access	No
Knockouts	No
Bottom Gland Plate	No
Material	Carbon steel
Color	ANSI 61 gray
Finish	Powder coat
Cover Type	Single-door
Hinge Type	Continuous hinge
Number of Hinges Per Door	1
Latch Type	(2) plated steel clamps
Padlock Attachment Type	Padlock hasp and staple
Shelf	No
Padlockable	Yes
Keylocking	No

Agency Approvals

UL Listed File #	E64791
UL Recognized File #	None
UL Hazardous File #	None
CE	None
CSA File #	None
RoHS Status	No
EU REACH	View EU REACH document

Dimensional Drawings



2D Drawing PDF Link:
<https://cdn.automationdirect.com/static/drawings/N12161606.pdf>
See store item page for other formats.