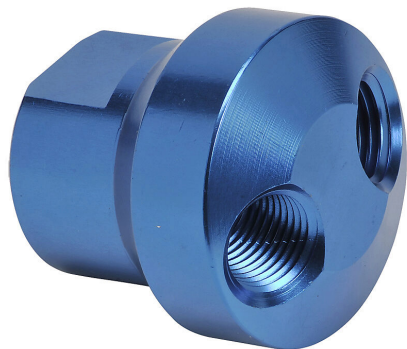


MYA-2 Cut Sheet



NITRA pneumatic valve manifold, aluminum, round, 500 psi maximum operating pressure, (2) stations, (1) 1/4in female NPT inlet(s), (2) 1/4in female NPT outlet(s).

For complete product information, please see this item on our store at the following link:



<https://www.automationdirect.com/pn/MYA-2>

Technical Specifications

Brand	NITRA
Item	Pneumatic Valve manifold
Material	Aluminum
Shape	Round
Number of Stations	2
Maximum Operating Pressure	500 psi
Inlet Port	(1) 1/4in female NPT
Outlet Port	(2) 1/4in female NPT

Agency Approvals

UL Listed File #	None
UL Recognized File #	None
UL Hazardous File #	None
CE	None
CSA File #	None
RoHS Status	No
EU REACH	View EU REACH document