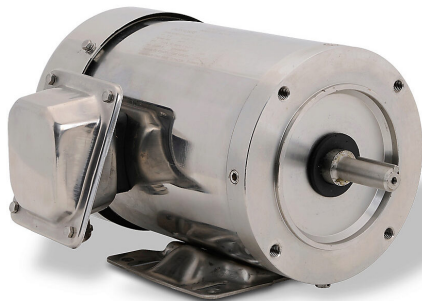


MTSS-P75-3BD18 Cut Sheet



IronHorse MTS premium efficiency AC induction motor, general purpose, 3/4hp, 3-phase, 208-230/460 VAC, 1800rpm, TEFC, NEMA 56C frame, 304 stainless steel, C-face/rigid base mount. Cable gland included.

For complete product information, please see this item on our store at the following link:



<https://www.automationdirect.com/pn/MTSS-P75-3BD18>

Technical Specifications

Brand	IronHorse
Item	Motor
Series	MTS
Efficiency Group	Premium efficiency
Efficiency	82.5
Voltage Type	AC
Motor Type	Induction
Motor Application	General purpose
Horsepower Rating	3/4hp
Number of Phases	3
Voltage Rating	208-230/460 VAC
Synchronous Speed	1800rpm
Nameplate RPM	1725rpm
Overload Type	None
Enclosure Type	TEFC
Shaft Type	Round with square key

Shaft Diameter	5/8in
Shaft Material	304 stainless steel
Motor Frame	NEMA 56C
Frame Material	304 stainless steel
Electrically Reversible	Yes
Insulation Class	Class F
IP Rating	IP56
Constant Torque Rating	2:1
Variable Torque Rating	5:1
Service Factor	1.15 (sine), 1.0 (drive)
Integrated Brake	No
NEMA Design	Design B
Junction Box Orientation	F1
Mounting	C-face/rigid base
Mounting Orientation	Horizontal or vertical
Includes	Cable gland

Agency Approvals

UL Listed File #	None
UL Recognized File #	None
UL Hazardous File #	None
CE	None
CSA File #	207449
RoHS Status	No
EU REACH	View EU REACH document

Dimensional Drawings



2D Drawing PDF Link:
<https://cdn.automationdirect.com/static/drawings/MTSS-P75-3BD18.pdf>
See store item page for other formats.