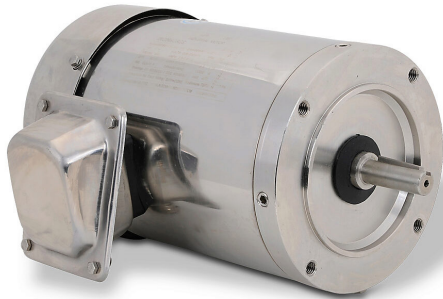


MTSS-P75-3BD18R Cut Sheet



IronHorse MTS premium efficiency AC induction motor, general purpose, 3/4hp, 3-phase, 208-230/460 VAC, 1800rpm, TEFC, NEMA 56C frame, 304 stainless steel, C-face mount. Cable gland included.

For complete product information, please see this item on our store at the following link:



<https://www.automationdirect.com/pn/MTSS-P75-3BD18R>

Technical Specifications

| | |
|--------------------------|-----------------------|
| Brand | IronHorse |
| Item | Motor |
| Series | MTS |
| Efficiency Group | Premium efficiency |
| Efficiency | 82.5 |
| Voltage Type | AC |
| Motor Type | Induction |
| Motor Application | General purpose |
| Horsepower Rating | 3/4hp |
| Number of Phases | 3 |
| Voltage Rating | 208-230/460 VAC |
| Synchronous Speed | 1800rpm |
| Nameplate RPM | 1725rpm |
| Overload Type | None |
| Enclosure Type | TEFC |
| Shaft Type | Round with square key |

| | |
|---------------------------------|--------------------------|
| Shaft Diameter | 5/8in |
| Shaft Material | 304 stainless steel |
| Motor Frame | NEMA 56C |
| Frame Material | 304 stainless steel |
| Electrically Reversible | Yes |
| Insulation Class | Class F |
| IP Rating | IP56 |
| Constant Torque Rating | 2:1 |
| Variable Torque Rating | 5:1 |
| Service Factor | 1.15 (sine), 1.0 (drive) |
| Integrated Brake | No |
| NEMA Design | Design B |
| Junction Box Orientation | F1 |
| Mounting | C-face |
| Mounting Orientation | Horizontal or vertical |
| Includes | Cable gland |

Agency Approvals

| | |
|-----------------------------|--|
| UL Listed File # | None |
| UL Recognized File # | None |
| UL Hazardous File # | None |
| CE | None |
| CSA File # | 207449 |
| RoHS Status | No |
| EU REACH | View EU REACH document |

Dimensional Drawings



2D Drawing PDF Link:
<https://cdn.automationdirect.com/static/drawings/MTSS-P75-3BD18R.pdf>
See store item page for other formats.