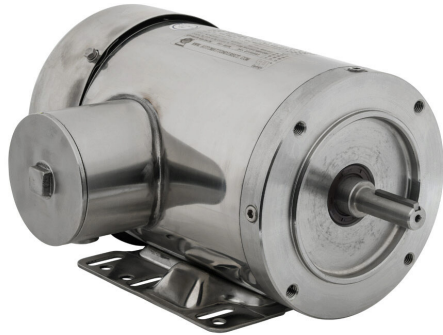


MTSP-1P5-3BD18 Cut Sheet



IronHorse MTS premium efficiency AC induction motor, washdown and inverter rated, 1-1/2hp, 3-phase, 208-230/460 VAC, 1800rpm, TEFC, NEMA 56C frame, 304 stainless steel, C-face/rigid base mount.

For complete product information, please see this item on our store at the following link:



<https://www.automationdirect.com/pn/MTSP-1P5-3BD18>

Technical Specifications

Brand	IronHorse
Item	Motor
Series	MTS
Efficiency Group	Premium efficiency
Efficiency	86.5
Voltage Type	AC
Motor Type	Induction
Motor Application	Washdown and inverter rated
Horsepower Rating	1-1/2hp
Number of Phases	3
Voltage Rating	208-230/460 VAC
Synchronous Speed	1800rpm
Nameplate RPM	1750rpm
Overload Type	None
Enclosure Type	TEFC
Shaft Type	Round with square key

Shaft Diameter	5/8in
Shaft Material	304 stainless steel
Motor Frame	NEMA 56C
Frame Material	304 stainless steel
Electrically Reversible	Yes
Insulation Class	Class F
IP Rating	IP69K
Constant Torque Rating	10:1
Variable Torque Rating	20:1
Service Factor	1.15
Integrated Brake	No
NEMA Design	Design B
Junction Box Orientation	F1
Mounting	C-face/rigid base
Mounting Orientation	Horizontal or vertical
Additional Information	Class I Div 2 hazardous rating

Agency Approvals

UL Listed File #	None
UL Recognized File #	E517327
UL Hazardous File #	None
CE	View CE declarations
CSA File #	602259
RoHS Status	Yes (See CE Doc)
EU REACH	View EU REACH document

Dimensional Drawings



2D Drawing PDF Link:
<https://cdn.automationdirect.com/static/drawings/2d/MTSP-1P5-3BD18.pdf>
See store item page for other formats.