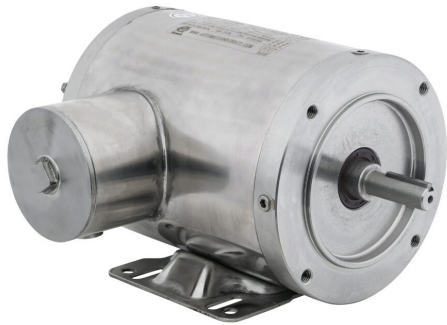


# MTSN-P75-3BD18 Cut Sheet



IronHorse MTS premium efficiency AC induction motor, washdown and inverter rated, 3/4hp, 3-phase, 208-230/460 VAC, 1800rpm, TENV, NEMA 56C frame, 304 stainless steel, C-face/rigid base mount.

For complete product information, please see this item on our store at the following link:



<https://www.automationdirect.com/pn/MTSN-P75-3BD18>

## Technical Specifications

<b>Brand</b>	IronHorse
<b>Item</b>	Motor
<b>Series</b>	MTS
<b>Efficiency Group</b>	Premium efficiency
<b>Efficiency</b>	81.5
<b>Voltage Type</b>	AC
<b>Motor Type</b>	Induction
<b>Motor Application</b>	Washdown and inverter rated
<b>Horsepower Rating</b>	3/4hp
<b>Number of Phases</b>	3
<b>Voltage Rating</b>	208-230/460 VAC
<b>Synchronous Speed</b>	1800rpm
<b>Nameplate RPM</b>	1755rpm
<b>Overload Type</b>	None
<b>Enclosure Type</b>	TENV
<b>Shaft Type</b>	Round with square key

<b>Shaft Diameter</b>	5/8in
<b>Shaft Material</b>	304 stainless steel
<b>Motor Frame</b>	NEMA 56C
<b>Frame Material</b>	304 stainless steel
<b>Electrically Reversible</b>	Yes
<b>Insulation Class</b>	Class F
<b>IP Rating</b>	IP69K
<b>Constant Torque Rating</b>	10:1
<b>Variable Torque Rating</b>	20:1
<b>Service Factor</b>	1.15
<b>Integrated Brake</b>	No
<b>NEMA Design</b>	Design B
<b>Junction Box Orientation</b>	F1
<b>Mounting</b>	C-face/rigid base
<b>Mounting Orientation</b>	Horizontal or vertical
<b>Additional Information</b>	Class I Div 2 hazardous rating

## Agency Approvals

<b>UL Listed File #</b>	None
<b>UL Recognized File #</b>	E517327
<b>UL Hazardous File #</b>	None
<b>CE</b>	<a href="#">View CE declarations</a>
<b>CSA File #</b>	602259
<b>RoHS Status</b>	Yes (See CE Doc)
<b>EU REACH</b>	<a href="#">View EU REACH document</a>

## Dimensional Drawings



2D Drawing PDF Link:  
<https://cdn.automationdirect.com/static/drawings/2d/MTSN-P75-3BD18.pdf>  
See store item page for other formats.