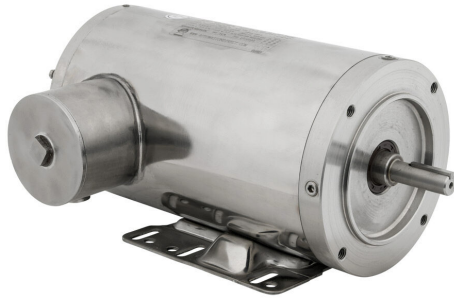


MTSN-002-3BD18 Cut Sheet



IronHorse MTS premium efficiency AC induction motor, washdown and inverter rated, 2hp, 3-phase, 208-230/460 VAC, 1800rpm, TENV, 56C frame, 304 stainless steel, C-face/rigid base mount.

For complete product information, please see this item on our store at the following link:



<https://www.automationdirect.com/pn/MTSN-002-3BD18>

Technical Specifications

Brand	IronHorse
Item	Motor
Series	MTS
Efficiency Group	Premium efficiency
Efficiency	86.5
Voltage Type	AC
Motor Type	Induction
Motor Application	Washdown and inverter rated
Horsepower Rating	2hp
Number of Phases	3
Voltage Rating	208-230/460 VAC
Synchronous Speed	1800rpm
Nameplate RPM	1750rpm
Overload Type	None
Enclosure Type	TENV
Shaft Type	Round with square key

Shaft Diameter	5/8in
Shaft Material	304 stainless steel
Motor Frame	56C
Frame Material	304 stainless steel
Electrically Reversible	Yes
Insulation Class	Class F
IP Rating	IP69K
Constant Torque Rating	10:1
Variable Torque Rating	20:1
Service Factor	1.15
Integrated Brake	No
NEMA Design	Design B
Junction Box Orientation	F1
Mounting	C-face/rigid base
Mounting Orientation	Horizontal or vertical
Additional Information	Class I Div 2 hazardous rating

Agency Approvals

UL Listed File #	None
UL Recognized File #	E517327
UL Hazardous File #	None
CE	View CE declarations
CSA File #	602259
RoHS Status	Yes (See CE Doc)
EU REACH	View EU REACH document

Dimensional Drawings



2D Drawing PDF Link:
<https://cdn.automationdirect.com/static/drawings/2d/MTSN-002-3BD18.pdf>
See store item page for other formats.