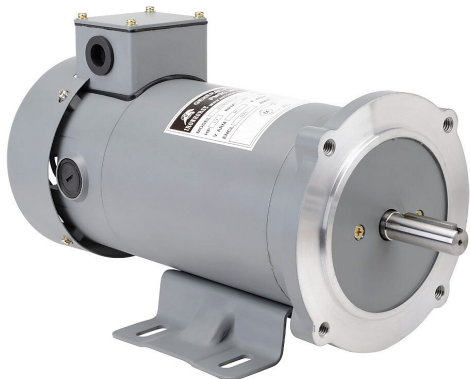


# MTPM-P75-1L18 Cut Sheet



IronHorse MTPM DC permanent magnet motor, SCR-PWM rated, 3/4hp, 90 VDC, 1800rpm, TEFC, NEMA 56C frame, rolled steel, C-face/removable rigid base mount. Replacement brushes included.

For complete product information, please see this item on our store at the following link:



<https://www.automationdirect.com/pn/MTPM-P75-1L18>

## Technical Specifications

<b>Brand</b>	IronHorse
<b>Item</b>	Motor
<b>Series</b>	MTPM
<b>Voltage Type</b>	DC
<b>Motor Type</b>	Permanent magnet
<b>Motor Application</b>	SCR-PWM rated
<b>Horsepower Rating</b>	3/4hp
<b>Voltage Rating</b>	90 VDC
<b>Synchronous Speed</b>	1800rpm
<b>Nameplate RPM</b>	1800rpm
<b>Overload Type</b>	None
<b>Enclosure Type</b>	TEFC
<b>Shaft Type</b>	Round with square key
<b>Shaft Diameter</b>	5/8in
<b>Shaft Material</b>	40 cold rolled heat treated hardness HB2800-320 steel

<b>Motor Frame</b>	NEMA 56C
<b>Frame Material</b>	Rolled steel
<b>Electrically Reversible</b>	Yes
<b>Insulation Class</b>	Class F
<b>IP Rating</b>	IP54
<b>Constant Torque Rating</b>	20:1
<b>Service Factor</b>	1.0
<b>Integrated Brake</b>	No
<b>Junction Box Orientation</b>	F3
<b>Mounting</b>	C-face/removable rigid base
<b>Mounting Orientation</b>	Horizontal or vertical
<b>Includes</b>	Replacement brushes
<b>Manufacturer Part Number</b>	WPMDC34-18-90V-56CB

## Agency Approvals

<b>UL Listed File #</b>	None
<b>UL Recognized File #</b>	None
<b>UL Hazardous File #</b>	None
<b>CE</b>	<a href="#">View CE declarations</a>
<b>CSA File #</b>	247070
<b>RoHS Status</b>	Yes (See CE Doc)
<b>EU REACH</b>	<a href="#">View EU REACH document</a>

## Dimensional Drawings



2D Drawing PDF Link:  
<https://cdn.automationdirect.com/static/drawings/MTPM-P75-1L18.pdf>  
See store item page for other formats.