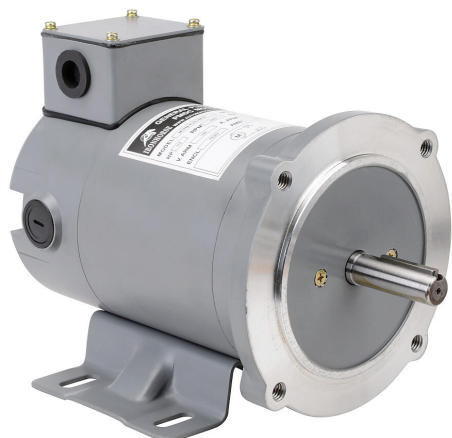


MTPM-P33-1M18 Cut Sheet



IronHorse MTPM DC permanent magnet motor, SCR-PWM rated, 1/3hp, 180 VDC, 1800rpm, TENV, NEMA 56C frame, rolled steel, C-face/removable rigid base mount. Replacement brushes included.

For complete product information, please see this item on our store at the following link:



<https://www.automationdirect.com/pn/MTPM-P33-1M18>

Technical Specifications

Brand	IronHorse
Item	Motor
Series	MTPM
Voltage Type	DC
Motor Type	Permanent magnet
Motor Application	SCR-PWM rated
Horsepower Rating	1/3hp
Voltage Rating	180 VDC
Synchronous Speed	1800rpm
Nameplate RPM	1800rpm
Overload Type	None
Enclosure Type	TENV
Shaft Type	Round with square key
Shaft Diameter	5/8in
Shaft Material	40 cold rolled heat treated hardness HB2800-320 steel

Motor Frame	NEMA 56C
Frame Material	Rolled steel
Electrically Reversible	Yes
Insulation Class	Class F
IP Rating	IP40
Constant Torque Rating	20:1
Service Factor	1.0
Integrated Brake	No
Junction Box Orientation	F3
Mounting	C-face/removable rigid base
Mounting Orientation	Horizontal or vertical
Includes	Replacement brushes
Manufacturer Part Number	WPMDC13-18-180V-56CB

Agency Approvals

UL Listed File #	None
UL Recognized File #	None
UL Hazardous File #	None
CE	View CE declarations
CSA File #	247070
RoHS Status	Yes (See CE Doc)
EU REACH	View EU REACH document

Dimensional Drawings



2D Drawing PDF Link:
<https://cdn.automationdirect.com/static/drawings/MTPM-P33-1M18.pdf>
See store item page for other formats.