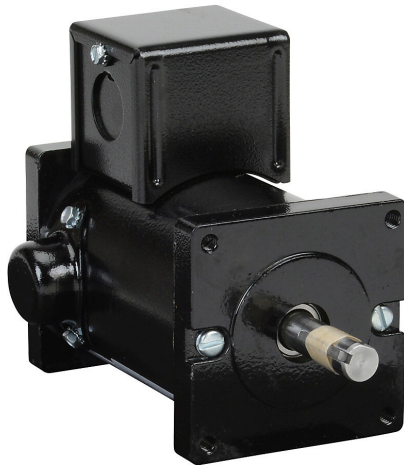


MTPM-P17-1JK43 Cut Sheet



IronHorse MTPM DC permanent magnet motor, SCR-PWM rated, 1/6hp, 12/24 VDC, 1841/4290rpm, TENV, small frame, rolled steel, flange mount.

For complete product information, please see this item on our store at the following link:



<https://www.automationdirect.com/pn/MTPM-P17-1JK43>

Technical Specifications

Brand	IronHorse
Item	Motor
Series	MTPM
Voltage Type	DC
Motor Type	Permanent magnet
Motor Application	SCR-PWM rated
Horsepower Rating	1/6hp
Voltage Rating	12/24 VDC
Synchronous Speed	1841/4290rpm
Nameplate RPM	1841/4290rpm
Overload Type	None
Enclosure Type	TENV
Shaft Type	Round full flat with keyway

Shaft Diameter	1/2in
Shaft Material	1215 cold rolled steel
Motor Frame	Small
Frame Material	Rolled steel
Electrically Reversible	Yes
Insulation Class	Class F
IP Rating	IP40
Service Factor	1.0
Integrated Brake	No
Junction Box Orientation	F3
Mounting	Flange
Mounting Orientation	Horizontal or vertical

Agency Approvals

UL Listed File #	None
UL Recognized File #	E365956
UL Hazardous File #	None
CE	None
CSA File #	259724
RoHS Status	Meets RoHS Chemical Restrictions - No CE (See RoHS Statement Below)
EU REACH	View EU REACH document
Other	RoHS Statement

Dimensional Drawings



2D Drawing PDF Link:
<https://cdn.automationdirect.com/static/drawings/MTPM-P17-1JK43.pdf>
See store item page for other formats.