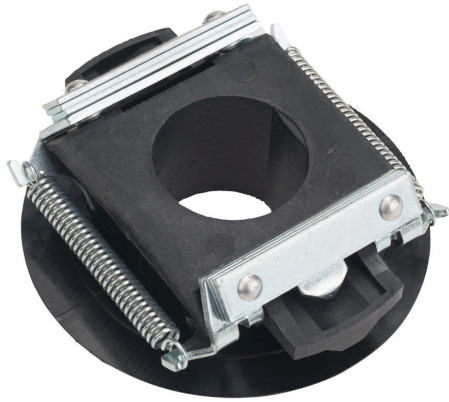


MTAF2-CSW-05 Cut Sheet



IronHorse centrifugal switch, replacement. For use with 182T and 184T frame IronHorse MTF2 series 1-phase AC motors. Not compatible with MTF series motors.

For complete product information, please see this item on our store at the following link:



<https://www.automationdirect.com/pn/MTAF2-CSW-05>

Technical Specifications

Brand	IronHorse
Item	Centrifugal switch
Replacement	Yes
For Use With	182T and 184T frame IronHorse MTF2 series 1-phase AC motors
Additional Information	Not compatible with MTF series motors

Agency Approvals

UL Listed File #	None
UL Recognized File #	None
UL Hazardous File #	None
CE	None
CSA File #	None
RoHS Status	No
EU REACH	View EU REACH document