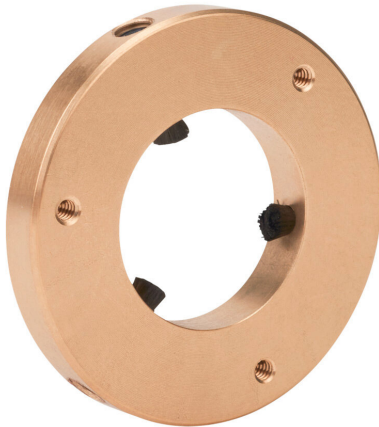


MTADP-CDR-140 Cut Sheet



IronHorse current diverter ring, for use with 143T and 145T frame drill and tap motors. MTDP series motors are drilled and tapped for mounting current diverter rings, others will require drilling and tapping to mount.

For complete product information, please see this item on our store at the following link:



<https://www.automationdirect.com/pn/MTADP-CDR-140>

Technical Specifications

Brand	IronHorse
Item	Current diverter ring
Replacement	No
For Use With	143T and 145T frame drill and tap motors
Additional Information	MTDP series motors are drilled and tapped for mounting current diverter rings, others will require drilling and tapping to mount

Agency Approvals

UL Listed File #	None
UL Recognized File #	None
UL Hazardous File #	None
CE	None
CSA File #	None
RoHS Status	No
EU REACH	View EU REACH document

Dimensional Drawings



2D Drawing PDF Link:
<https://cdn.automationdirect.com/static/drawings/MTADP-CDR-140.pdf>
See store item page for other formats.