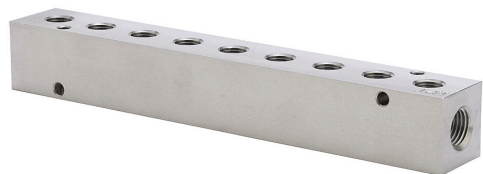


# MRS-9CB Cut Sheet



NITRA pneumatic valve manifold, stainless steel, rectangular, 3500 psi maximum operating pressure, (9) stations, (2) 1/4in female NPT inlet(s), (9) 1/8in female NPT outlet(s), standard hole spacing.

For complete product information, please see this item on our store at the following link:



<https://www.automationdirect.com/pn/MRS-9CB>

## Technical Specifications

<b>Brand</b>	NITRA
<b>Item</b>	Pneumatic Valve manifold
<b>Material</b>	Stainless steel
<b>Shape</b>	Rectangular
<b>Number of Stations</b>	9
<b>Maximum Operating Pressure</b>	3500 psi
<b>Inlet Port</b>	(2) 1/4in female NPT
<b>Outlet Port</b>	(9) 1/8in female NPT
<b>Mounting Hole Spacing</b>	Standard

## Agency Approvals

<b>UL Listed File #</b>	None
<b>UL Recognized File #</b>	None
<b>UL Hazardous File #</b>	None
<b>CE</b>	None
<b>CSA File #</b>	None
<b>RoHS Status</b>	No
<b>EU REACH</b>	<a href="#">View EU REACH document</a>