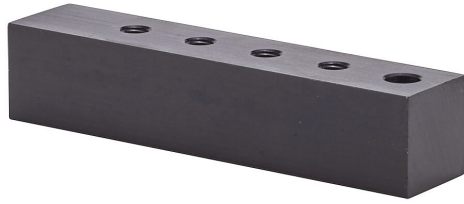


MRA-4BA Cut Sheet



NITRA pneumatic valve manifold, aluminum, black, rectangular, 1000 psi maximum operating pressure, (4) stations, (1) 1/8in female NPT inlet(s), (4) #10-32 female UNF outlet(s), standard hole spacing.

For complete product information, please see this item on our store at the following link:



<https://www.automationdirect.com/pn/MRA-4BA>

Technical Specifications

| | |
|-----------------------------------|-----------------------|
| Brand | NITRA |
| Item | Valve manifold |
| Working Fluid | Air or inert gas |
| Material | Aluminum |
| Color | Black |
| Shape | Rectangular |
| Number of Stations | 4 |
| Maximum Operating Pressure | 1000 psi |
| Inlet Port | (1) 1/8in female NPT |
| Outlet Port | (4) #10-32 female UNF |
| Mounting Hole Spacing | Standard |

Agency Approvals

| | |
|-----------------------------|--|
| UL Listed File # | None |
| UL Recognized File # | None |
| UL Hazardous File # | None |
| CE | None |
| CSA File # | None |
| RoHS Status | No |
| EU REACH | View EU REACH document |

Dimensional Drawings



2D Drawing PDF Link:
<https://cdn.automationdirect.com/static/drawings/MRA-4BA.pdf>
See store item page for other formats.