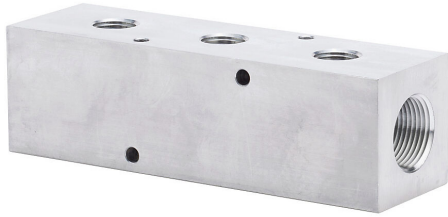


MRA-3GE Cut Sheet



NITRA pneumatic valve manifold, aluminum, silver, rectangular, 1000 psi maximum operating pressure, (3) stations, (2) 1in female NPT inlet(s), (3) 1/2in female NPT outlet(s), standard hole spacing.

For complete product information, please see this item on our store at the following link:



<https://www.automationdirect.com/pn/MRA-3GE>

Technical Specifications

Brand	NITRA
Item	Valve manifold
Working Fluid	Air or inert gas
Material	Aluminum
Color	Silver
Shape	Rectangular
Number of Stations	3
Maximum Operating Pressure	1000 psi
Inlet Port	(2) 1in female NPT
Outlet Port	(3) 1/2in female NPT
Mounting Hole Spacing	Standard

Agency Approvals

UL Listed File #	None
UL Recognized File #	None
UL Hazardous File #	None
CE	None
CSA File #	None
RoHS Status	No
EU REACH	View EU REACH document

Dimensional Drawings



2D Drawing PDF Link:
<https://cdn.automationdirect.com/static/drawings/MRA-3GE.pdf>
See store item page for other formats.