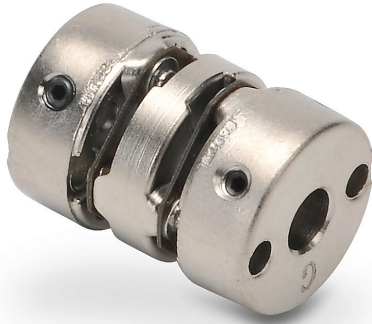


ML13P-4-476D Cut Sheet



AutomationDirect encoder coupling, 4mm to 3/16in bore, aluminum alloy body, setscrew. For use with Koyo TRD-MX series encoders.

For complete product information, please see this item on our store at the following link:



<https://www.automationdirect.com/pn/ML13P-4-476D>

Technical Specifications

Brand	AutomationDirect
Item	Encoder coupling
Bore	4mm to 3/16in
Length	19mm
Body Material	Aluminum alloy
Attachment Style	Setscrew
For Use With	Koyo TRD-MX series encoders

Agency Approvals

UL Listed File #	None
UL Recognized File #	None
UL Hazardous File #	None
CSA File #	None
RoHS Status	No
EU REACH	View EU REACH document