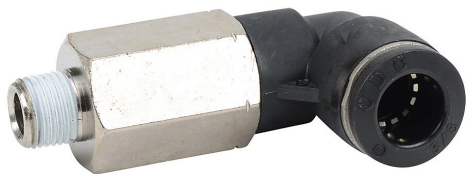


MEL38-18N Cut Sheet



NITRA pneumatic push-to-connect fitting, male, long elbow, rotating, thermoplastic (PBT) body, nickel-plated brass threads, 3/8in tube to 1/8in NPT connection(s). Package of 5.

For complete product information, please see this item on our store at the following link:



<https://www.automationdirect.com/pn/MEL38-18N>

Technical Specifications

Brand	NITRA
Item	Pneumatic Push-to-connect Fitting
Gender	Male
Fitting Type	Long elbow
Fitting Function	Rotating
Body Material	Thermoplastic (PBT)
Thread Material	Nickel-plated brass
Thread Sealant	Yes
Connection	1/8in NPT and 3/8in push-to-connect
Operating Pressure	-29.5in Hg to 150 psi
Operating Temperature	32 to 140 deg F
Quantity per Pack	5
For Use With	Flexible pneumatic tubing

Agency Approvals

UL Listed File #	None
UL Recognized File #	None
UL Hazardous File #	None
CE	None
CSA File #	None
RoHS Status	No
EU REACH	View EU REACH document