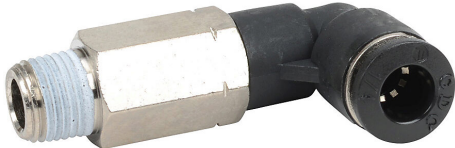


MEL14-18N Cut Sheet



NITRA pneumatic push-to-connect fitting, long elbow, rotating, thermoplastic (PBT) body, nickel-plated brass threads, thread sealant, (1) 1/8in male NPT to (1) 1/4in push-to-connect. Package of 5.

For complete product information, please see this item on our store at the following link:



<https://www.automationdirect.com/pn/MEL14-18N>

Technical Specifications

Brand	NITRA
Item	Fitting
Working Fluid	Air or inert gas
Fitting Connection Type	Push-to-connect
Fitting Type	Long elbow
Fitting Function	Rotating
Body Material	Thermoplastic (PBT)
Thread Material	Nickel-plated brass

Thread Sealant	Yes
Fitting Measurement Type	SAE
Connection	(1) 1/8in male NPT and (1) 1/4in push-to-connect
Operating Pressure	-29.5in Hg to 150 psi
Operating Temperature	32 to 140 deg F
Quantity per Pack	5
For Use With	Flexible pneumatic tubing

Agency Approvals

UL Listed File #	None
UL Recognized File #	None
UL Hazardous File #	None
CE	None
CSA File #	None
RoHS Status	No
EU REACH	View EU REACH document

Dimensional Drawings



2D Drawing PDF Link:
<https://cdn.automationdirect.com/static/drawings/MEL14-18N.pdf>
See store item page for other formats.