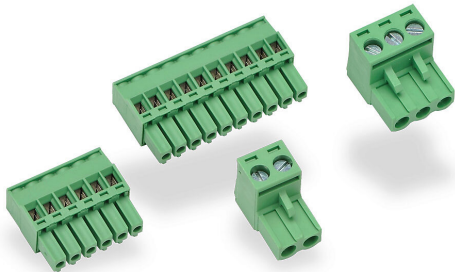


MD-TERM-SET Cut Sheet



ViewMarq pluggable terminal block set, replacement. For use with ViewMarq message display. Includes (1) 2-pole DC power connector, (1) 3-pole AC power connector, (1) 10-pole discrete input connector, and (1) 6-pole serial communications connector.

For complete product information, please see this item on our store at the following link:



<https://www.automationdirect.com/pn/MD-TERM-SET>

Technical Specifications

Brand	ViewMarq
Item	Pluggable terminal block set
Replacement	Yes
For Use With	ViewMarq message display
Set Includes	(1) 2-pole DC power connector, (1) 3-pole AC power connector, (1) 10-pole discrete input connector, and (1) 6-pole serial communications connector

Agency Approvals

UL Listed File #	None
UL Recognized File #	None
UL Hazardous File #	None
CE	None
CSA File #	None
RoHS Status	No
EU REACH	View EU REACH document