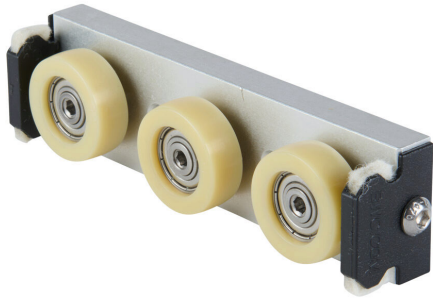


LUC-2-3W Cut Sheet



SureMotion LUC series crown carriage, single row ball bearing, 3-wheel, end seal, polyacetal/440C stainless steel. For use with SureMotion LUC-2 series guide tracks.

For complete product information, please see this item on our store at the following link:



<https://www.automationdirect.com/pn/LUC-2-3W>

Technical Specifications

Brand	SureMotion
Item	Crown carriage
Series	LUC
Bearing Type	Single row ball bearing
Number of Wheels	3
Seal Type	End seal
Material	Polyacetal/440C stainless steel
Mass	246g
Lateral Load Rating (Lt)	142N
Yaw Moment Load Rating (My)	3.2 N-m
For Use With	SureMotion LUC-2 series guide tracks

Agency Approvals

UL Listed File #	None
UL Recognized File #	None
UL Hazardous File #	None
CE	View CE declarations
CSA File #	None
RoHS Status	Yes (See CE Doc)
EU REACH	View EU REACH document

Dimensional Drawings



2D Drawing PDF Link:
<https://cdn.automationdirect.com/static/drawings/2d/LUC-2-3W.pdf>
See store item page for other formats.