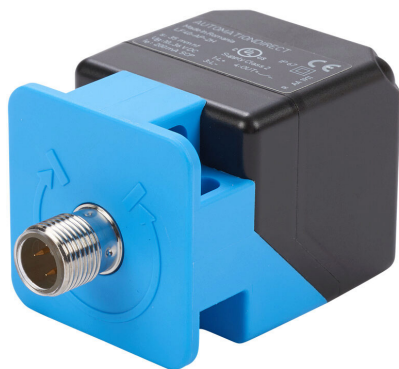


LF40-AP-2H Cut Sheet



AutomationDirect inductive proximity sensor, rectangular, 40 x 40 x 66mm body, die-cast zinc nickel-plated housing, PNP, N.O. output, 35mm sensing distance, non-flush, 80 Hz switching frequency, IP67, 4-pin M12 quick-disconnect.

For complete product information, please see this item on our store at the following link:



<https://www.automationdirect.com/pn/LF40-AP-2H>

Technical Specifications

Brand	AutomationDirect
Item	Proximity sensor
Sensor Type	Inductive
Application	Standard duty and long range
Shape	Rectangular
Housing Size	40 x 40 x 66mm body
Housing Material	Die-cast zinc nickel-plated
Sensing Method	Extended sensing
Adjustable	No
Number of Wires	3
Switching Output	PNP
Operation Mode	N.O. output
Sensing Distance	35mm
Mounting Type	Non-flush
IO-Link Compatible	No
Switching Frequency	80 Hz
Operating Voltage	10-36 VDC
Operating Temperature	-25 to 70c
Weld Field Immune	No
Chip Immune	No
IP Rating	IP67
Connection	4-pin M12 quick-disconnect
Additional Information	Purchase cable separately

Agency Approvals

UL Listed File #	E328811
UL Recognized File #	None
UL Hazardous File #	None
CE	View CE declarations
CSA File #	None
RoHS Status	Yes (See CE Doc)
EU REACH	View EU REACH document