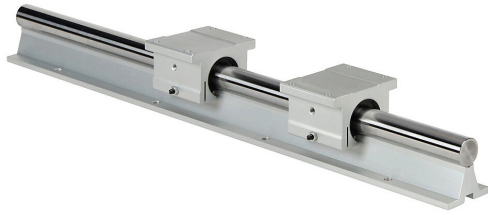


# LARSB1-16L24C Cut Sheet



SureMotion slide element, continuously supported, round shaft, 1in shaft diameter, 24in overall length, carbon steel. (2) single pillow blocks included.

For complete product information, please see this item on our store at the following link:



<https://www.automationdirect.com/pn/LARSB1-16L24C>

---

## Technical Specifications

<b>Brand</b>	SureMotion
<b>Item</b>	Slide element
<b>Support Type</b>	Continuously
<b>Shaft Type</b>	Round
<b>Shaft Diameter</b>	1in
<b>Overall Length</b>	24in
<b>Material</b>	Carbon steel
<b>Includes</b>	(2) single pillow blocks

---

## Agency Approvals

<b>UL Listed File #</b>	None
<b>UL Recognized File #</b>	None
<b>UL Hazardous File #</b>	None
<b>CE</b>	None
<b>CSA File #</b>	None
<b>RoHS Status</b>	No
<b>EU REACH</b>	<a href="#">View EU REACH document</a>

---

## Dimensional Drawings



2D Drawing PDF Link:  
<https://cdn.automationdirect.com/static/drawings/LARSB1-16L24C.pdf>  
See store item page for other formats.