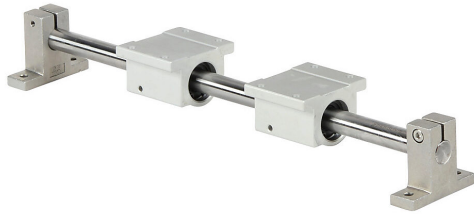


LARSA1-08L12C Cut Sheet



SureMotion slide element, end supported, round shaft, 1/2in shaft diameter, 12in overall length, carbon steel. (2) single pillow blocks included.

For complete product information, please see this item on our store at the following link:



<https://www.automationdirect.com/pn/LARSA1-08L12C>

Technical Specifications

Brand	SureMotion
Item	Slide element
Support Type	End
Shaft Type	Round
Shaft Diameter	1/2in
Overall Length	12in
Material	Carbon steel
Includes	(2) single pillow blocks

Agency Approvals

UL Listed File #	None
UL Recognized File #	None
UL Hazardous File #	None
CE	None
CSA File #	None
RoHS Status	No
EU REACH	View EU REACH document

Dimensional Drawings



2D Drawing PDF Link:
<https://cdn.automationdirect.com/static/drawings/LARSA1-08L12C.pdf>
See store item page for other formats.