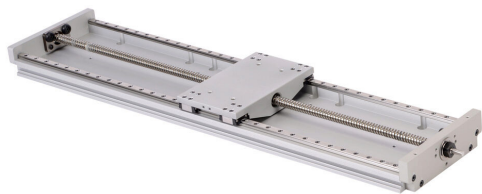


# LAHP-33WTM410LP25 Cut Sheet

SureMotion linear actuator assembly, twin square bearing rail, 120mm wide, 410mm travel, lead screw, 0.25in pitch, carbon steel rail.

For complete product information, please see this item on our store at the following link:



<https://www.automationdirect.com/pn/LAHP-33WTM410LP25>

---

## Technical Specifications

<b>Brand</b>	SureMotion
<b>Item</b>	Linear actuator assembly
<b>Actuator Type</b>	Twin square bearing rail
<b>Width</b>	120mm
<b>Carriage Height</b>	33mm
<b>Travel Length</b>	410mm
<b>Driver Type</b>	Lead screw
<b>Pitch</b>	0.25in
<b>Rail Material</b>	Carbon steel

---

## Agency Approvals

<b>UL Listed File #</b>	None
<b>UL Recognized File #</b>	None
<b>UL Hazardous File #</b>	None
<b>CE</b>	<a href="#">View CE declarations</a>
<b>CSA File #</b>	None
<b>RoHS Status</b>	Yes (See CE Doc)
<b>EU REACH</b>	<a href="#">View EU REACH document</a>

---

## Dimensional Drawings



2D Drawing PDF Link:  
<https://cdn.automationdirect.com/static/drawings/LAHP-33WTM410LP25.pdf>  
See store item page for other formats.