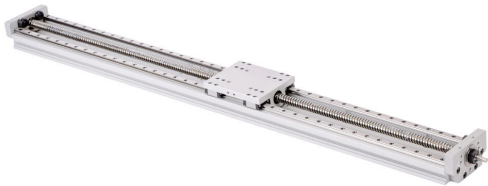


LAHP-33TM510LP25 Cut Sheet



SureMotion linear actuator assembly, twin square bearing rail, 60mm wide, 510mm travel, lead screw, 0.25in pitch, carbon steel rail.

For complete product information, please see this item on our store at the following link:



<https://www.automationdirect.com/pn/LAHP-33TM510LP25>

Technical Specifications

Brand	SureMotion
Item	Linear actuator assembly
Actuator Type	Twin square bearing rail
Width	60mm
Carriage Height	33mm
Travel Length	510mm
Driver Type	Lead screw
Pitch	0.25in
Rail Material	Carbon steel

Agency Approvals

UL Listed File #	None
UL Recognized File #	None
UL Hazardous File #	None
CE	View CE declarations
CSA File #	None
RoHS Status	Yes (See CE Doc)
EU REACH	View EU REACH document

Dimensional Drawings



2D Drawing PDF Link:
<https://cdn.automationdirect.com/static/drawings/LAHP-33TM510LP25.pdf>
See store item page for other formats.