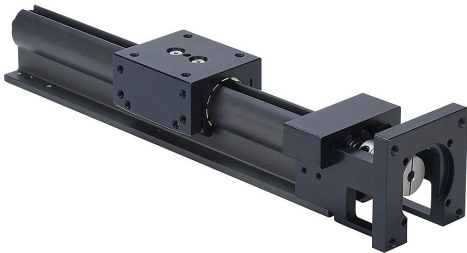


LACP2-16T06LP5 Cut Sheet



SureMotion linear actuator assembly, Gen 2 compact, 2.030in wide, 6in travel, lead screw, 0.5in pitch, hard coated aluminum rail.

For complete product information, please see this item on our store at the following link:



<https://www.automationdirect.com/pn/LACP2-16T06LP5>

Technical Specifications

Brand	SureMotion
Item	Linear actuator assembly
Actuator Type	Gen 2 compact
Width	2.030in
Carriage Height	1.81in
Travel Length	6in
Driver Type	Lead screw
Pitch	0.5in
Rail Material	Hard coated aluminum

Agency Approvals

CE	None
RoHS Status	No
EU REACH	View EU REACH document

Dimensional Drawings



2D Drawing PDF Link:
<https://cdn.automationdirect.com/static/drawings/LACP2-16T06LP5.pdf>
See store item page for other formats.