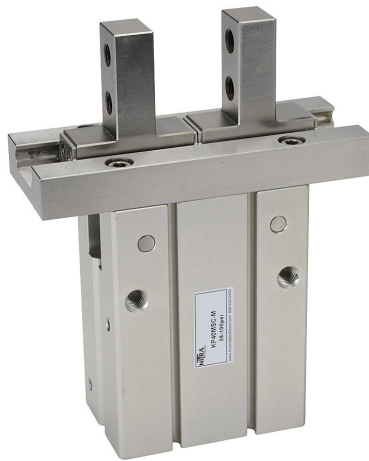


KP40MSC-M Cut Sheet



NITRA pneumatic gripper, parallel, single acting, N.C., 40mm bore, 30mm stroke, side mount grip, anodized aluminum body, M5 x 0.8 threaded port(s).

For complete product information, please see this item on our store at the following link:



<https://www.automationdirect.com/pn/KP40MSC-M>

Technical Specifications

Brand	NITRA
Item	Gripper
Working Fluid	Pneumatic
Grip Type	Parallel
Action Type	Single acting
Operation Mode	N.C.
Bore Diameter	40mm
Stroke	30mm
Grip Mount Style	Side
Body Material	Anodized aluminum
Port Information	M5 x 0.8 threaded
Repeatability	+/- 0.02mm
Cycle Rate	60 cyc/min
Resulting Gripper Travel	30mm

Agency Approvals

UL Listed File #	None
UL Recognized File #	None
UL Hazardous File #	None
CE	None
CSA File #	None
RoHS Status	No
EU REACH	View EU REACH document