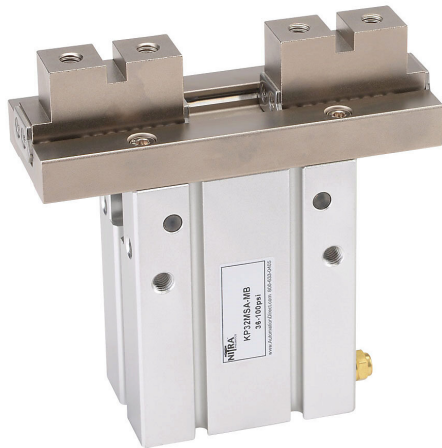


# KP32MSA-MB Cut Sheet



NITRA pneumatic gripper, parallel, single acting, N.O., 32mm bore, 22mm stroke, end mount grip, anodized aluminum body, M5 x 0.8 threaded port(s).

For complete product information, please see this item on our store at the following link:



<https://www.automationdirect.com/pn/KP32MSA-MB>

## Technical Specifications

<b>Brand</b>	NITRA
<b>Item</b>	Gripper
<b>Working Fluid</b>	Pneumatic
<b>Grip Type</b>	Parallel
<b>Action Type</b>	Single acting
<b>Operation Mode</b>	N.O.
<b>Bore Diameter</b>	32mm
<b>Stroke</b>	22mm
<b>Grip Mount Style</b>	End
<b>Body Material</b>	Anodized aluminum
<b>Port Information</b>	M5 x 0.8 threaded
<b>Repeatability</b>	+/- 0.02mm
<b>Cycle Rate</b>	60 cyc/min
<b>Resulting Gripper Travel</b>	22mm

## Agency Approvals

<b>UL Listed File #</b>	None
<b>UL Recognized File #</b>	None
<b>UL Hazardous File #</b>	None
<b>CE</b>	None
<b>CSA File #</b>	None
<b>RoHS Status</b>	No
<b>EU REACH</b>	<a href="#">View EU REACH document</a>