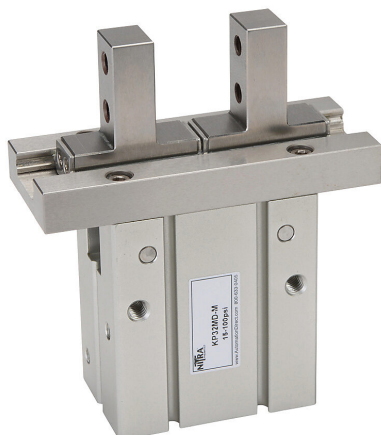


# KP32MD-M Cut Sheet



NITRA pneumatic gripper, parallel, double acting, 32mm bore, 22mm stroke, side mount grip, anodized aluminum body, M5 x 0.8 female ISO port(s).

For complete product information, please see this item on our store at the following link:



<https://www.automationdirect.com/pn/KP32MD-M>

## Technical Specifications

<b>Brand</b>	NITRA
<b>Item</b>	Gripper
<b>Working Fluid</b>	Air or inert gas
<b>Grip Type</b>	Parallel
<b>Action Type</b>	Double acting
<b>Bore Diameter</b>	32mm
<b>Stroke</b>	22mm
<b>Grip Mount Style</b>	Side

<b>Body Material</b>	Anodized aluminum
<b>Port Size</b>	M5 x 0.8 female ISO
<b>Repeatability</b>	±0.02mm
<b>Cycle Rate</b>	60 cyc/min
<b>Resulting Gripper Travel</b>	22mm
<b>Minimum Operating Pressure</b>	22 psi
<b>Maximum Operating Pressure</b>	101 psi

## Agency Approvals

<b>UL Listed File #</b>	None
<b>UL Recognized File #</b>	None
<b>UL Hazardous File #</b>	None
<b>CE</b>	None
<b>CSA File #</b>	None
<b>RoHS Status</b>	No
<b>EU REACH</b>	<a href="#">View EU REACH document</a>

## Dimensional Drawings



2D Drawing PDF Link:  
<https://cdn.automationdirect.com/static/drawings/KP32MD-M.pdf>  
See store item page for other formats.