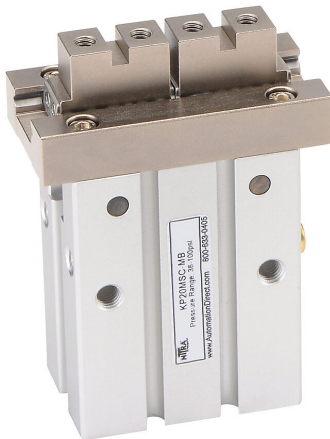


KP20MSC-MB Cut Sheet



NITRA pneumatic gripper, parallel, single acting, N.C., 20mm bore, 10mm stroke, end mount grip, anodized aluminum body, M5 x 0.8 female ISO port(s).

For complete product information, please see this item on our store at the following link:



<https://www.automationdirect.com/pn/KP20MSC-MB>

Technical Specifications

Brand	NITRA
Item	Gripper
Working Fluid	Air or inert gas
Grip Type	Parallel
Action Type	Single acting
Operation Mode	N.C.
Bore Diameter	20mm
Stroke	10mm
Grip Mount Style	End
Body Material	Anodized aluminum
Port Size	M5 x 0.8 female ISO
Repeatability	+/- 0.01mm
Cycle Rate	180 cyc/min
Resulting Gripper Travel	10mm

Agency Approvals

UL Listed File #	None
UL Recognized File #	None
UL Hazardous File #	None
CE	None
CSA File #	None
RoHS Status	No
EU REACH	View EU REACH document

Dimensional Drawings



2D Drawing PDF Link:
<https://cdn.automationdirect.com/static/drawings/KP20MSC-MB.pdf>
See store item page for other formats.